

CATTLE-FAX

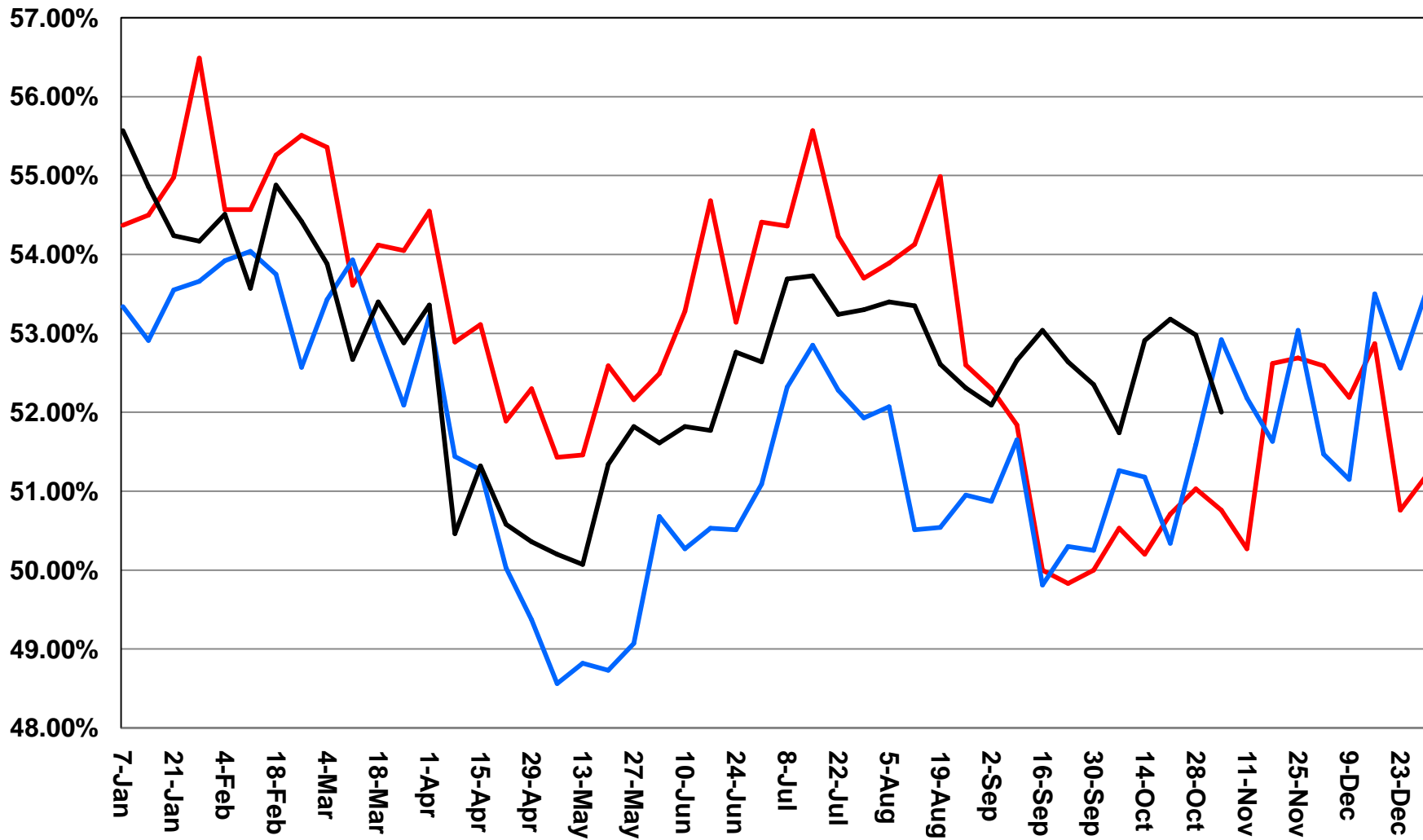
Industry Insight and Analysis

**Choice Quality Grade &
Choice/Select Spread**

800-825-7525

The U.S. choice quality grade has declined from the seasonal peak this summer. In early 2008 expect the choice grade to increase, this will correlate with the narrowing of the choice/select spread. The region of Nebraska, on average, continues to experience a year to year decline in choice quality grade of 1%. In Kansas, the grade is up 3% vs. 2006. In Texas, the choice quality grade is up .35%.

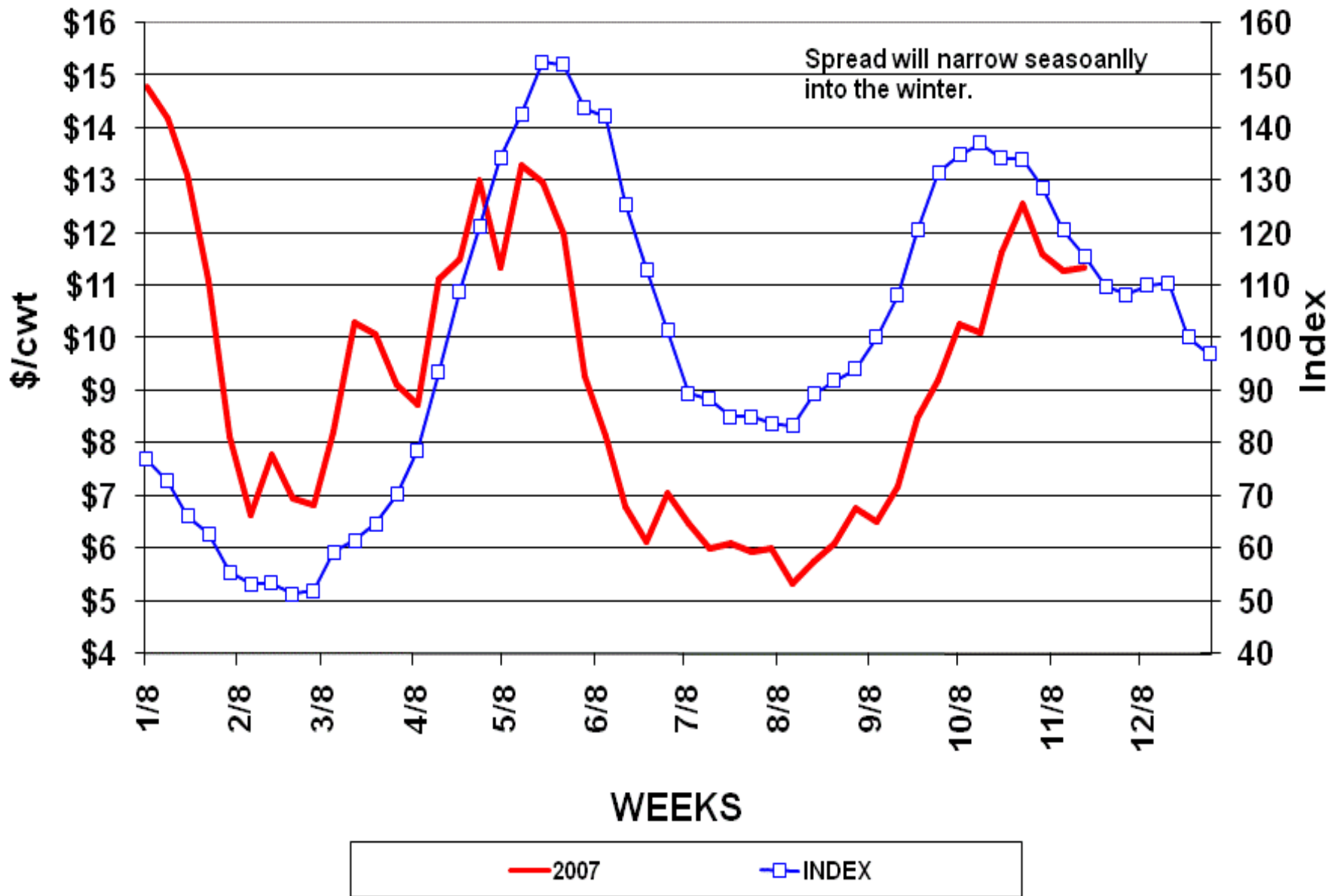
US Choice Quality Grade



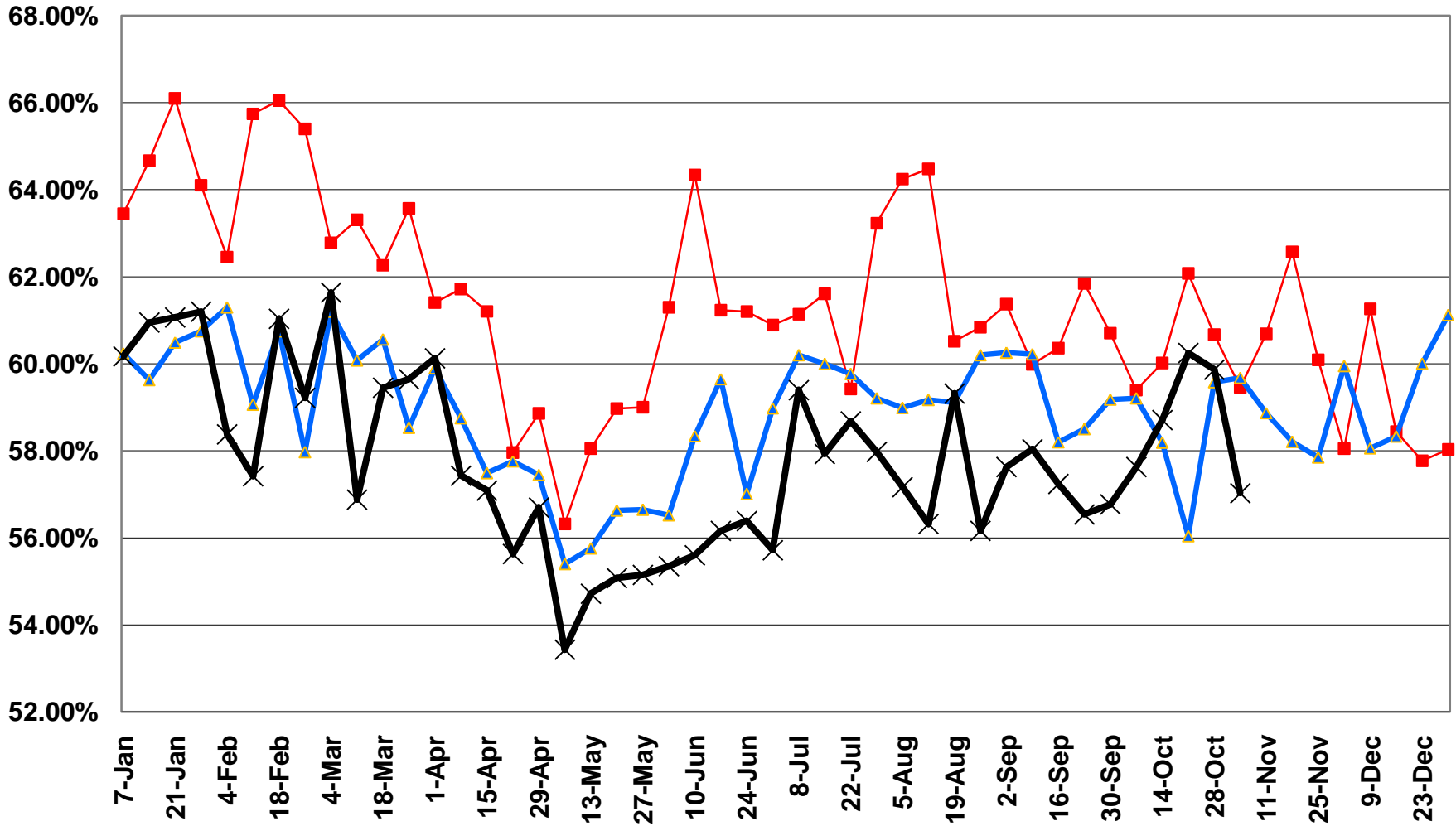
Source: USDA

— 2005 — 2006 — 2007

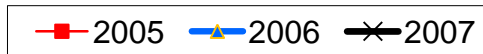
Weekly Choice-Select Spread Seasonal



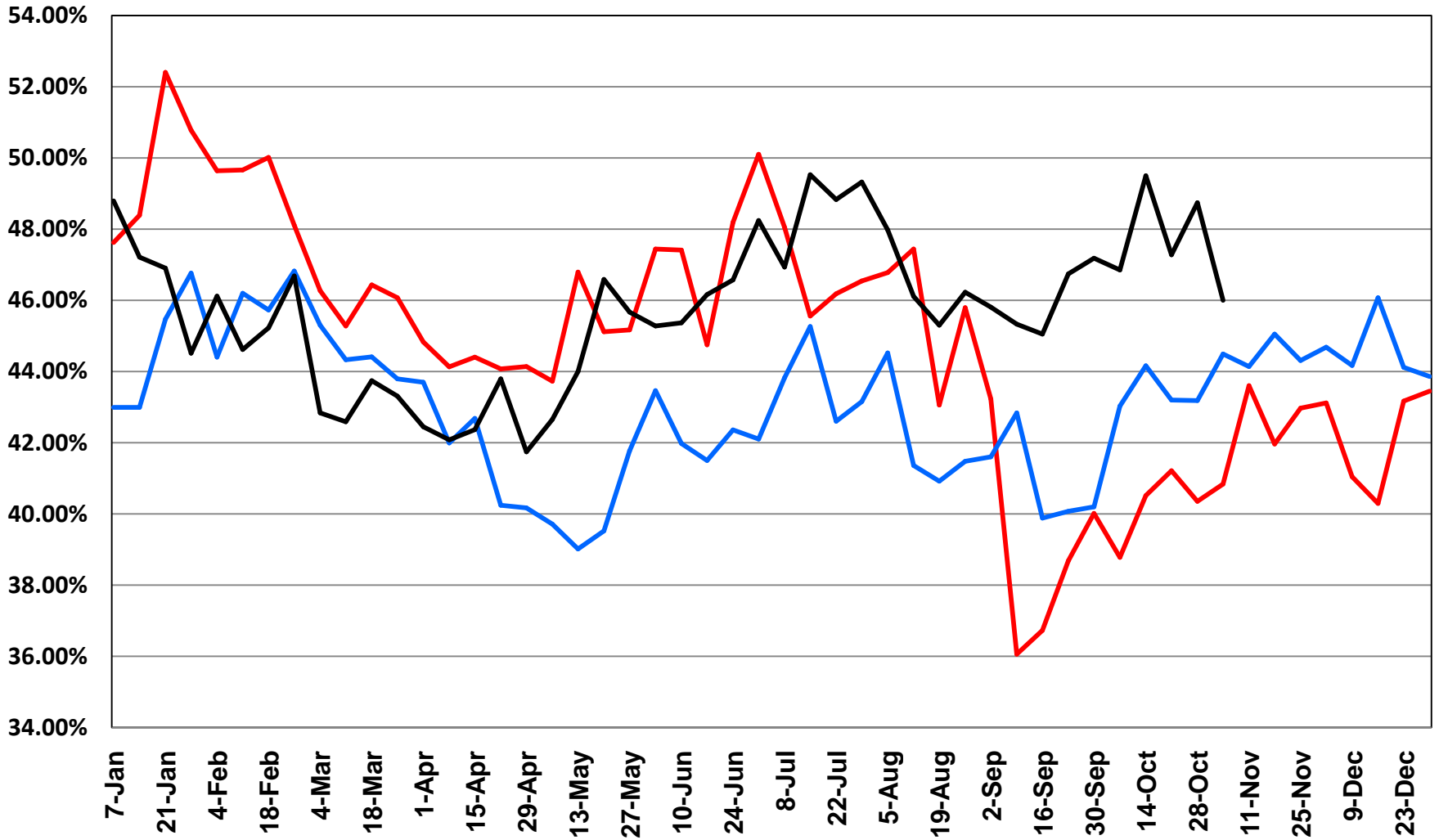
Nebraska Choice Quality Grade



Source: USDA



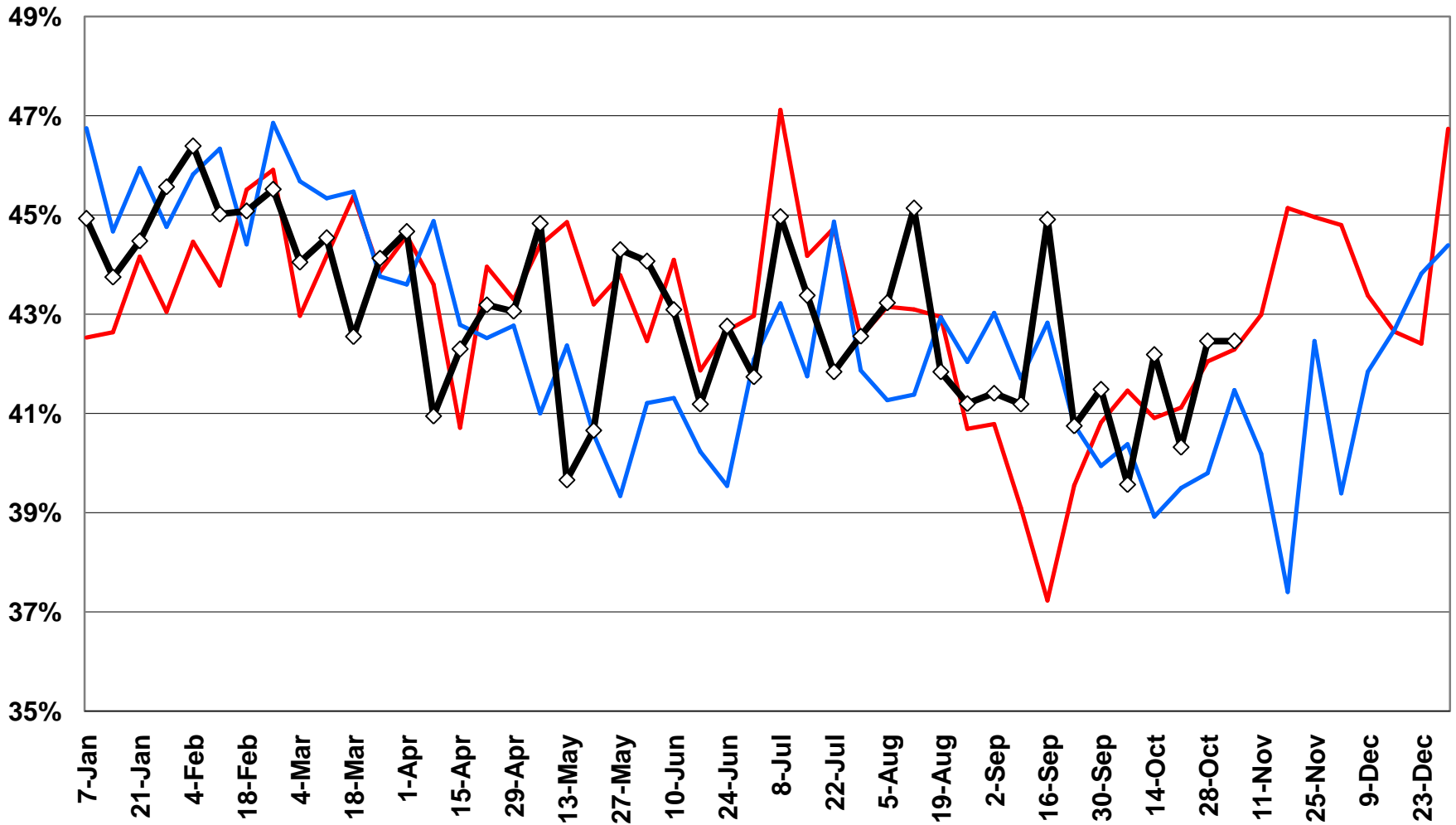
Kansas Choice Quality Grade



Source: USDA

— 2005 — 2006 — 2007

Texas Choice Quality Grade



Source: USDA

